



AONS 2015 CONFERENCE

Flying the Spirit of Asian Oncology Nursing

November 19-21, 2015

Seoul St. Mary's Hospital, The Catholic University of Korea

Hosted by

Asian Oncology Nursing Society 

Organized by

Korean Oncology Nursing Society 



AONS 2015 CONFERENCE

*Flying the Spirit of
Asian Oncology Nursing*

TABLE OF CONTENTS

AONS 2015 CONFERENCE

04 :: Invitation
05 :: AONS Executive Board / Organizing Committee
06 :: Overview / Important Dates
07 :: Program at a Glance
08 :: Scientific Program
10 :: Call for Abstracts / Registration
12 :: Accommodation / Venue
13 :: Transportation
14 :: About Seoul, Korea

INVITATION

Dear Colleagues and Friends,

On behalf of the organizing committee, it is our great honor and pleasure to invite you to Asian Oncology Nursing Society (AONS) 2015 Conference which will be held from November 19 to 21, 2015 in Seoul, Korea.

The AONS was established in 2013 with a mission to contribute to cancer nursing. Our vision is that cancer patients in Asia will receive the best care from nurses who are well prepared in providing high quality and science-based care. Oncology nursing in Asia became more important due to the increasing number of new cancer cases and cancer deaths. About one-half of all new cancer cases and all cancer deaths respectively occur in Asian region (International Agency for Research on Cancer, 2012).

We are very honored to hold the 2nd AONS Conference in Korea after a great success in the 1st AONS Conference in Thailand, 2013.

Under the theme of "Flying the spirit of Asian Oncology Nursing" a wide range of scientific programs and social activities will be organized. We are very interested in sharing the efforts and the know-hows of oncology nursing with other countries and trying to cooperate and unite to widen a range of oncology nursing in the Asian region.

We have no doubt that the AONS 2015 Conference will not only provide you with wonderful opportunities to catch up on the latest advancements but also to meet and collaborate with your colleagues.

We hope you will give us your greatest support by actively participating in the conference and look forward to meeting you in the dynamic and beautiful city of Seoul, Korea.

Sincerely,



Myungsun Yi

Myungsun Yi, DNS, RN
President
AONS 2014-2015



Kwang Sung Kim

Kwang Sung Kim, PhD, RN
Chairperson
AONS 2015 Conference



AONS EXECUTIVE BOARD

PRESIDENT

Myungsun Yi Seoul, Korea

PRESIDENT ELECT

Pongpak Pittayapan Bangkok, Thailand

THE TREASURER

Kazuko Onishi Mie, Japan

THE SECRETARY FOR EXTERNAL

Winnie K. W. So Hong Kong SAR, China

THE SECRETARY FOR INTERNAL

Young Yi Chen China

ORGANIZING COMMITTEE

PRESIDENT

Myungsun Yi College of Nursing Seoul National University

CHAIRPERSON

Kwang Sung Kim Seoul St. Mary's Hospital, The Catholic University of Korea

SCIENTIFIC COMMITTEE CHAIR

Kyung Hee Lim College of Nursing Keimyung University

PLANNING&FINANCE COMMITTEE CHAIR

Eun-sook Choi National Cancer Center

PUBLIC RELATIONS COMMITTEE CHAIR

Jeong Hye Kim Asan Medical Center

REGISTRATION COMMITTEE CHAIR

Han Jin Yoo National Cancer Center

PUBLICATION COMMITTEE CHAIR

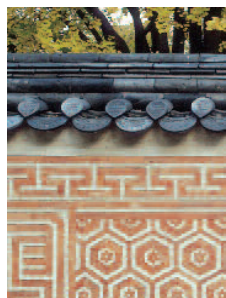
Eun Jung Ryu College of Nursing Chung-Ang University

OVERVIEW

TITLE	Asian Oncology Nursing Society 2015 Conference
THEME	Flying the Spirit of Asian Oncology Nursing
DATE	November 19 (Thu)-21 (Sat), 2015
VENUE	Seoul St. Mary's Hospital, The Catholic University of Korea
HOST	Asian Oncology Nursing Society
ORGANIZATION	Korean Oncology Nursing Society
WEBSITE	www.aons.asia
OFFICIAL LANGUAGE	English

IMPORTANT DATES

Abstract Submission Deadline	FEBRUARY 28, 2015
Early-Bird Registration Deadline	MAY 31, 2015
Regular-Registration Deadline	SEPTEMBER 30, 2015



PROGRAM AT A GLANCE

	Nov. 19	Nov. 20	Nov. 21
09:00			
09:30		Official Opening Ceremony & Welcome	Keynote Address II
10:00			Coffee / Tea Break
10:30		Keynote Address I	Concurrent Session B1
11:00			Concurrent Session B2
11:30			Concurrent Session B3
12:00		Coffee / Tea Break	
12:30		Plenary I	Lunch
13:00			Coffee / Tea Break
13:30		Lunch	Plenary II
14:00	Cancer Center Tour	Concurrent Session A1	Plenary III
14:30		Concurrent Session A2	Coffee / Tea Break
15:00		Concurrent Session A3	Lectureship
15:30			Young Scholar Awards & Closing Ceremony
16:00		Coffee / Tea Break	
16:30		Panel Discussion	
17:00			
17:30			
18:00	AONS Board Meeting		
18:30			
19:00		Gala Dinner	
19:30			
20:00			
20:30			

KEYNOTE ADDRESS

I Professional Development for Asian Oncology Nurses

II Quality of Life of Cancer Patients

PLENARY

I Future of Oncology Nursing Research

II Cancer Survivorship

III Advanced Symptom Management for Cancer Patients

CONCURRENT SESSION

A1 Prevention & Screening

B1 Supportive & Palliative Care

A2 Symptom Management

B2 Quality of Life

A3 Evidence Based Practice

B3 Quality & Safety

PANEL DISCUSSION

Health Insurance for Cancer Care in Asia

LECTURESHIP

Tailored Treatment and Care

NOVEMBER 19 (THU), 2015

Pre-Conference Day

12:00-13:00 Cancer Center Tour Registration

14:00-16:00 Cancer Center Tour

Supported by Asan Medical Center, National Cancer Center, Samsung Medical Center,
Seoul National University Hospital, Seoul St. Mary's Hospital, Severance Hospital

17:00-20:00 AONS Board Meeting & Dinner

NOVEMBER 20 (FRI), 2015

Conference Day 1

09:30-10:30 Official Opening Ceremony and Welcome

10:30-12:00 Keynote Address I

Professional Development for Asian Oncology Nurses

Myungsun Yi (President of AONS, Korea)

12:00-12:20 Coffee / Tea Break with Exhibits and Poster Session 1

12:20-13:10 Plenary I

Future of Oncology Nursing Research

Winnie K. W. So (China)

13:10-14:30 Lunch

14:30-15:50 Concurrent Session

A1 Prevention & Screening

A2 Symptom Management

A3 Evidence Based Practice

15:50-16:20 Coffee / Tea Break with Exhibits and Poster Session 1

16:20-17:30 Panel Discussion

Health Insurance for Cancer Care in Asia

China, India, Japan, Korea, Thailand

18:30-21:00 Gala Dinner

SCIENTIFIC PROGRAM

NOVEMBER 21 (SAT), 2015

Conference Day 2

09:00-10:30 Keynote Address II

Quality of Life of Cancer Patients

Carol E. Ferrans (U.S.A.)

10:30-11:00 Coffee / Tea Break with Exhibits and Poster Session 2

11:00-12:20 Concurrent Session

B1 Supportive & Palliative Care

B2 Quality of Life

B3 Quality & Safety

12:20-13:30 Lunch

13:30-14:00 Coffee / Tea Break with Exhibits and Poster Session 2

14:00-14:50 Plenary II

Cancer Survivorship

Kazuko Onishi (Japan)

14:50-15:50 Plenary III

Advanced Symptom Management for Cancer Patients

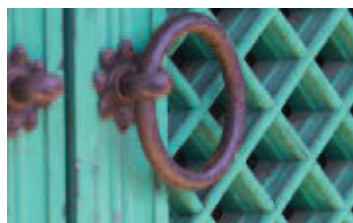
15:50-16:20 Coffee / Tea Break with Exhibits and Poster Session 2

16:20-17:10 Lectureship

Tailored Treatment and Care

Young-Seon Hong (Korea)

17:10-18:00 Young Scholar Awards & Closing Ceremony



CALL FOR ABSTRACTS

Abstract Submission Deadline: **FEBRUARY 28, 2015**

- Abstract should be submitted electronically via the website. (www.aons.asia)
- All abstracts will be reviewed by the Scientific Program Committee and assigned to the appropriate session for oral or poster presentations.
- Presented abstracts will be published in the abstract book.
- All presenting authors of accepted abstracts should attend the symposium and register via online by the pre-registration date.

ABSTRACT TOPICS

- Prevention & Screening
- Symptom Management
- Evidence Based Practice
- Supportive & Palliative Care
- Quality of Life
- Quality & Safety

AWARDS

AONS 2015 Scientific Program Committee will select best oral presentation and distinguished posters based on the submitted abstract and presentation at the conference. Winners will receive a prize.

REGISTRATION

Early-Bird Registration Deadline: **MAY 31, 2015**

Regular-Registration Deadline: **SEPTEMBER 30, 2015**

All participants are requested to register via online system.

Participants are encouraged to register as early as possible to take advantage of discounted registration fees.

REGISTRATION FEE

Early-Bird (By May 31, 2015)	Regular (By September 30, 2015)	On-site (November 19-21, 2015)
USD 200	USD 250	USD 300

* If you want to join a cancer center tour, please make a reservation in advance on the website.

* Gala Dinner: USD 30 (USD30 should be paid besides the registration fee)

REGISTRATION

Fees for All Meeting Participants Include:

- Participation in the Scientific Sessions
- Coffee / Tea Breaks
- Conference Kit
- Entrance to the Exhibition
- The Printed Material of the Conference

PAYMENT METHOD

Bank Transfer

A direct bank transfer should be made to the account below.

Please note that the bank charge for remittance should be paid by the registrants.

Overseas Participants	Korean Participants
Bank Name: Shinhan Bank Account Holder: Korean Oncology Nursing Society Account No: 180-006-556930 Swift Code: SHBK KRSE Branch Name: Dongdaesingdong Branch Address: 66, Daeyeong-ro, Seo-gu, Busan 602-808, Korea	은행명: 신한은행 계좌명: 대한종양간호학회 계좌번호: 100-030-271228

Credit Card

Visa, Mastercard, and American Express are accepted.

All participants wishing to make a credit card payment should settle the payment via online.

CANCELLATION AND REFUND POLICY

Cancellation must be notified to the secretariat in writing by e-mail (office@aons.asia)

All refunds will be made after the conference for administrative reasons, and all bank services charges and all administration fee will be deducted from all conference registration refunds.

Early-Bird (By May 31, 2015)	Regular (By September 30, 2015)	On-site (November 19-21, 2015)
80% Refund	50% Refund	No Refund



ACCOMMODATION

AONS 2015 Conference has secured accommodations in and around the conference venue, offering special rates for accommodation. Depending on the availability of rooms, rooms will be allocated on a first-come-first-served basis.

Hotel	Room Type	Rate (Including VAT)	Breakfast	Distance to Venue
SEOUL PALACE	Business Twin (2 single beds)	KRW 181,500	KRW 26,620	5 min. by walk
	Palace Family Twin (1 double bed+1 single bed)	KRW 193,600	KRW 26,620	
GRAND AMBASSADOR	Superior King or Twin	KRW 170,500	KRW 26,400	20 min. by car
RESIDENCES	We will provide you with the detailed Residence information on the website in 2015.			

Reservation Method

To book your hotel room, please visit the AONS 2015 Conference website, download and complete the hotel reservation form, and directly send it to each contact person of hotel via e-mail or fax. Then the hotel's person in charge will contact you.

VENUE

MARIA HALL (1F, Songeui Building, The Catholic University of Korea)

Seoul St. Mary's Hospital, The Catholic University of Korea

Address : 222 Banpo-Daero, Seocho-Gu, Seoul, Korea



TRANSPORTATION

Seoul St. Mary's Hospital is conveniently located within minutes by car, subway, bus, or on foot from many of Seoul's international companies, hotels, and government buildings. The JW Marriott Hotel, the Express Bus Terminal, and subway lines 3 and 7 are a five-minute walk across a pedestrian bridge from the hospital's International Health Care Center, and subway line 2 is a seven-minute walk from the hospital. The Hospital has ample parking space and is a short drive from Banpo Bridge and the Olympic Expressway.



Incheon International Airport

Section	Bus Stop No.	Via
Garak Market (No.609)	5A, 11B	Gangnam Express Bus Terminal
Jamsil (No.600)	6A, 12B	Gangnam Express Bus Terminal
Airport Shuttle Bus bound for Gangnam Express Bus Terminal	4A, 10A	Gangnam Express Bus Terminal (Central City, Marriott Hotel)
Gangnam (past Hotel) bound Airport Shuttle Bus	4B, 11A	Palace Hotel

*Airline passengers can take the airport shuttle bus (airport limousine) at Incheon International Airport.

Gimpo Internatinal Airport

It will be convenient if you use the subway.

(Departure from Gimpo Int'l Airport → arrival at Express Bus Terminal)

Between the hotels and venue

Detail Information will be notified later on the website.

ABOUT KOREA

Visitors to Seoul are often struck by the city's unique atmosphere and diverse style. Evidence of Korea's modern development and technological leadership abounds, yet Seoul's illustrious history, dating back to the founding of the Joseon Dynasty in 1392, has far from been ignored. Ancient palaces and temples that have existed for centuries stand side-by-side with high-tech towering skyscrapers in this city where the old and new exist in perfect harmony.

ATTRACTIONS IN SEOUL



Art

The city has over 700 museums, including the national museum of Korea and national folk museum, all containing a countless number of artifacts. There are many performance centers, such as the sejong center for the Performing arts, national Theater and more, as well as over 400 galleries displaying various works of art.



Culture

Tradition is not the only thing which can be found in seoul. There is a wide range of modern and fusion culture of the West and the east, along with up-to-date, cutting edge technology, and a number of world class performances, including 'NANTA', 'JUMP' and b-boy performances.



UNESCO world heritage sites

come and visit the royal tombs of the Joseon dynasty: seonjeongneung (tomb), Taereung and Gangreung (royal tombs), Jeongneung (royal tomb), changdeokgung (palace), and Jongmyo (royal shrine).



Dining

Visitors to seoul often name Korean cuisine as one of the memorable highlights of their trip. You can enjoy not only Kimchi, Galbi or bi-bimbap, but also taste a variety of world cuisines.



Shopper's Paradise

Korea offers a wide variety of shopping opportunities: arcades, department stores, duty-free shops, districts specialized in shopping, and outdoor markets.

- Traditional Outdoor Markets:

Namdaemun Market, Dongdaemun Market

- Popular Shopping Districts in Seoul: Myeong-dong, Insa-dong, Itaewon

* for more information on seoul, please visit at <http://english.visitkorea.or.kr>

ABOUT SEOUL, KOREA

USEFUL INFORMATION

Weather

Korea's climate is regarded as a continental climate from a temperate standpoint and a monsoon climate from a precipitation standpoint. The climate of Korea is characterized by four distinct seasons: spring, summer, fall, and winter. Essentially, the most tourist friendly seasons here are Spring between April and June, when the cherry blossoms are in full bloom as well as Autumn from September to November when the skies are clear, sunny and warm. Spring and Autumn which are pleasant but short in duration provide a welcome relief from the extremes of summer and winter. The average temperature of June in between Spring and Summer, when the conference will be held, is 21.9°C

Time Zone

The time in Korea is 9 hours ahead of the Greenwich Mean Time (GMT+9).

Currency & Exchange

The unit of the Korean currency is the Won (₩). Various notes and coins are used: notes include 1,000 won, 5,000 won, 10,000 won and 50,000 won denominations, while coins include 10 won, 50 won, 100 won and 500 won denominations. As of March 2012, the exchange rate is approximately USD 1 to KRW 1,127. Foreign bank notes and traveler's checks can be converted into the Korean won at foreign exchange banks and other authorized money exchange outlets. The exchange rate is subject to market fluctuations.

Taxes & Tipping

Tipping is not a regular practice in Korea. Service charges are included in your bill for rooms, meals and other services at hotels and luxurious restaurants. Koreans occasionally do tip when they are especially pleased with the service they receive.

Passport & Visa

All foreign visitors entering South Korea must possess valid passports. Nationals of most countries may enter visa-free for a maximum duration of 30 days, given possession of confirmed return or alternate destination tickets. Nationals of EU countries may remain in South Korea for up to 3 months (2 months for Italian nationals) under the same conditions. All participants, regardless of nationality, are encouraged to contact their local Korean consulate for specific details and confirmation of requirements. For more information, visit <http://www.mofat.go.kr/english/visa/apply/index.jsp>

Electricity

The standard electricity supply is 220-volts AC/60 cycles. Most hotels may provide outlet converters for 110 and 220 volts. We advise you to check with the hotel beforehand.



Korean
Oncology
Nursing
Society

Secretariat for AONS 2015 Conference | SY Convention

Tel. +82-2-6082-9291 Fax. +82-2-6499-9291

E-mail. office@aons.asia Website. www.aons.asia



KOREA
TOURISM
ORGANIZATION
www.visitkorea.or.kr